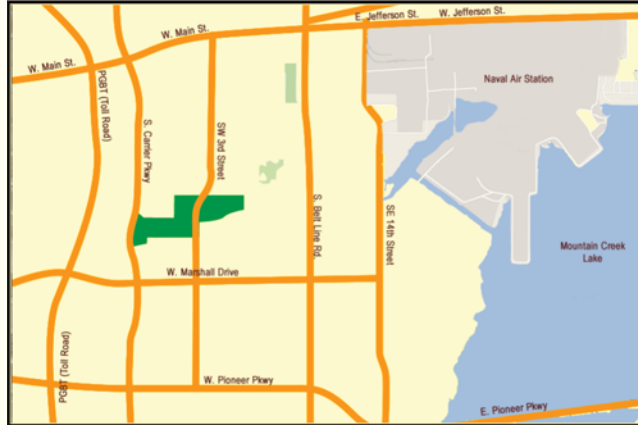


Interior Features

- Ceiling Fans
 - Handicapped Accessible
 - Frost Free Refrigerators with Ice Makers
 - Built-in Microwaves
 - Full Size Washer / Dryer Connections
 - Built-in Bookshelves / Entertainment Centers*
 - Walk-in Closets*
 - Pre-wired for Cable Television
 - Telephone & Internet
 - Kitchens with Pass-through Breakfast Bar
 - Garden Tubs*
 - Linen Closets*
 - Faux Blinds
 - Patios & Balconies
 - Laminate Wood Flooring*
 - Energy Efficient
- * In Select Units

Exterior Features

- Gated Community
- On-site Laundry Facility
- Inviting Pool with Spa & Fountain
- Playground
- Fitness Center
- Computer Center
- Planned After School Activities
- Covered Parking
- Garages
- Storage Rooms



From 30 West take Beltline exit and go south to Skyline Rd. and turn left on Skyline Rd. The property will be on your right, directly before 14th street.

Management Office:
1350 Skyline Rd.
Grand Prairie, TX 75051

(972) 262.9100

Fax: (972) 262-9103

manager@homesofmountaincreekapts.com



Professionally managed by:



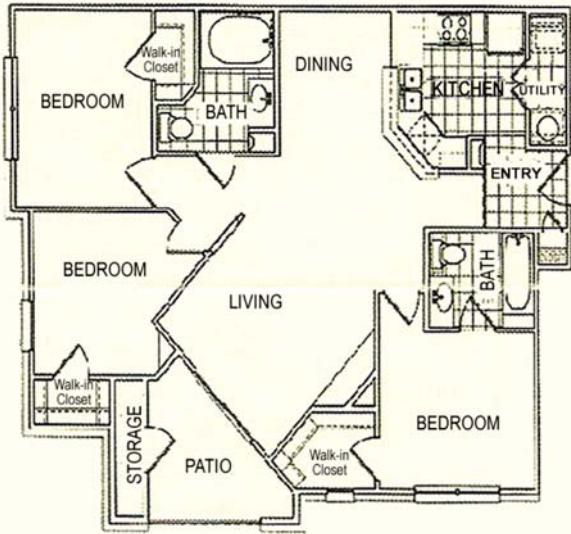
The Homes of
Mountain Creek

*Experience Luxury
at an
Affordable Price!*

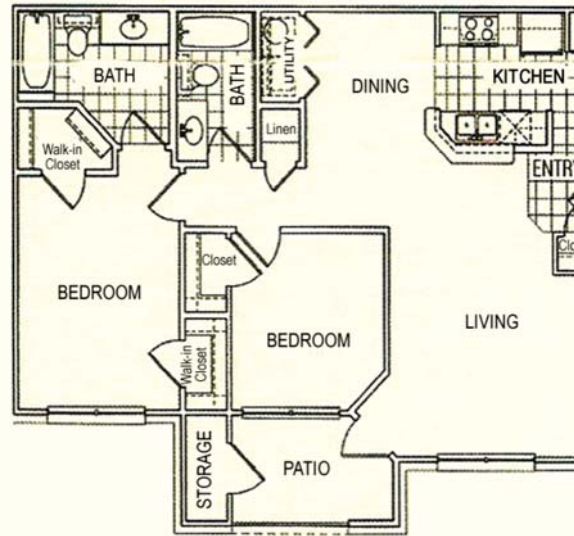


homesofmountaincreekapts.com

(972) 262.9100

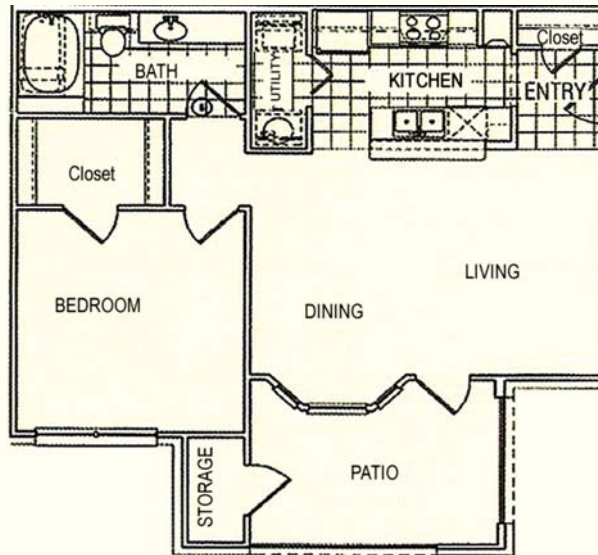


Rent _____
Deposit _____



Unit B1
2 Bedroom / 2 Bath
Approx. 967 Sq. Ft.*

Rent _____
Deposit _____



Unit A1
1 Bedroom / 1 Bath
Approx. 741 Sq. Ft.*

Rent _____
Deposit _____



Unit C1
3 Bedroom / 2 Bath
Approx. 1096 Sq. Ft.*

(972) 262.9100

*All square footage is approximate

